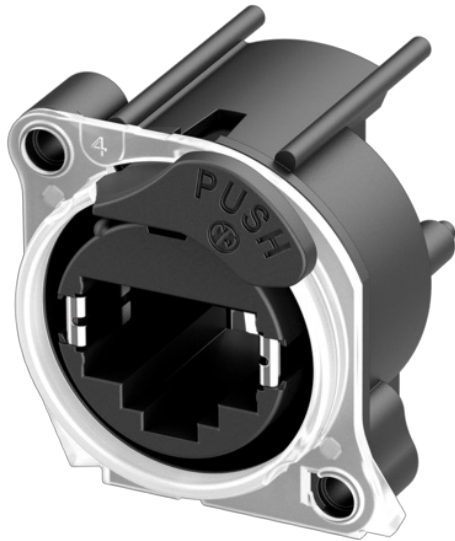


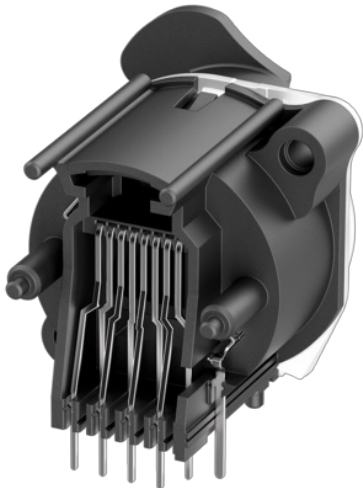
NE8FAH-LR-DAE

etherCON receptacle integrating the Neutrik unique Halo feature and asymmetric non-metallic push tab.



Horizontal PCB mount RJ45 receptacle, A-Series cutout with latch lock, max. panel thickness 3 mm and asymmetric non-metallic push tab.

The etherCON Series is a ruggedized and lockable RJ45 connector system, optimized for pro audio, video and lightning network applications. The chassis connectors are shaped to fit into standardized panels out of the entertainment industry.



More than a connector, the `State of the Art` receptacle. Round plastic body etherCON PCB mount panel connector, integrating the completely new, patented light ring and asymmetric non-metallic push elements.

The all-plastic A-Series offers the most space saving and cost-effective design. Light ring for status indication and improved ESD performance with asymmetric non-metallic push.

Attention! Does not intermate with CAT6 cable connector NE8MC6-MO and NKE6S* cables.

Features & Benefits

- Accommodates rugged etherCON NE8MX* or any standard RJ45 plug
- Most space saving and cost-effective design
- Housing flammability UL94 V-0
- Light ring offers innovative, forward-looking alternative to light pipes
- Improved visibility compared to light pipes
- Attractive signaling and design element
- Vertical space saving compared to standard push tabs
- Easier to use push tab with larger push area
- Approved latch lock system
- Isolated to panel ground
- CAT5e / Class D according to TIA/EIA 568C and ISO/IEC 11801
- Standard cutout / no additional holes for light pipes required
- Multiple colors available via left- and right-side SMD LEDs
- Compound material improves ESD performance
- Matte color of push tab eliminates disturbing light reflections from a metal push tab
- PoE type 4 class 8 (100W) acc. IEEE 802.3bt

NOTE: to avoid light bleed (crosstalk), use 46 mm center-to-center spacing for multiple connectors if no light barriers employed within enclosure

Technical Information

Product	
Title	NE8FAH-LR-DAE
Connection Type	RJ45
Number of contacts	8
Gender	Female

Electrical	
Contact resistance	< 50 mΩ
Dielectric strength	1 kVdc
Frequency range	1 - 100 MHz
Insulation resistance	> 0.5 GΩ
Rated current per contact	1,5 A
Rated voltage	≤ 57 V
Transmission performance	CAT5e acc. to TIA/EIA 568C channel specifications CLASS D acc. to ISO/IEC 11801 channel specifications
Power over Ethernet	PoE type 4 class 8 (100W) acc. IEEE 802.3bt

Mechanical	
Insertion force	≤ 20 N
Withdrawal force	≤ 20 N
Lifetime	> 1000 mating cycles
Panel thickness	max. 3 mm (0.12")
Wiring	Horizontal PCB mount
Locking device	Latch lock
Mounting direction	Rear mounting
Chassis shape	A
Mounting	A-Screw

Material	
Contact plating	0.2 µm Gold (Au) over Nickel (Ni) plating
Contacts	Bronze (CuSn8)
Insert	PBTP 15 % GR
Shell	PBTP 15 % GR

Environmental	
Flammability according to UL 94	V-0
Protection class according to IEC 60529	IP 40
Pollution degree according to IEC 60664-1	Pollution degree 2
Solderability	Complies with IEC 60068-2-20
Temperature range	-30 °C to +80 °C
Maximum operating temperature	+80 °C
Standard compliance	ISO/IEC 11801-1 Ed. 1.0 (2017-11) IEC 60603-7-3 Ed.2.0 (2010-04) IEC 60512-99-002 Ed.2.0 (2022-01) IEC 60512-9-3 (2011-06)