



PRODUCT MANUAL

powerCON® TRUE1® TOP | NAC3FX-W-TOP-L

1 APPLICATION INSTRUCTION

✓ IP 65 RATED



APPLICATION:

- The powerCON® TRUE1® system is certified as appliance couplers with breaking capacity according to IEC 60320-1, EN IEC 60320-1, UL 60320-1, CSA C22.2 No. 60320-1.
- It serves to supply power to an appliance and from an appliance to other equipment.
- To be installed by qualified person only.
- Appliance couplers acc. to IEC 60320-1 are suitable to be used in cord sets and interconnection cord sets acc. to IEC 60799

POWER IN

APPLIANCE INLET
NAC3MPX-TOP
NAC3MPX-WOT-TOP



CONNECTOR
NAC3FX-W-TOP-L

POWER OUT

APPLIANCE OUTLET
NAC3FPX-TOP
NAC3FPX-WOT-TOP
NAC3FPX-ST-TOP



PLUG CONNECTOR
NAC3MX-W-TOP-L

POWER IN / POWER OUT ► Combination

APPLIANCE INLET / APPLIANCE OUTLET
NAC3PX-TOP



CONNECTOR
NAC3FX-W-TOP-L

PLUG CONNECTOR
NAC3MX-W-TOP-L

Products are in
compliance with:

IEC 60320-1
EN IEC 60320-1



UL 60320-1
CSA C22.2 No. 60320-1



Ratings:

16A 250V AC

20A 250V AC

Conductor cross section:

2.5 mm²

14 - 12 AWG

Cable O.D.:

10.0 - 16.0 mm (0.39 - 0.63")

10.0 - 16.0 mm (0.39 - 0.63")

CABLE LIST

Cable:
IEC/EN 60320-1

3 x 2.5 mm²

■ H07RN-F

✓

-

Cable:
UL 60320-1, CAN/CSA-C22.2 No. 60320-1

14/3 AWG

12/3 AWG

■ SOOW

-

✓

✓

■ SJOOW

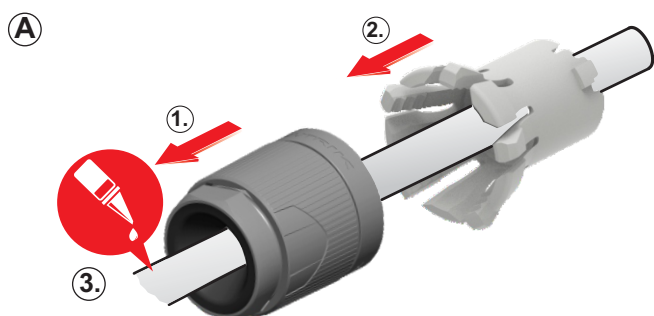
-

-

✓



2 ASSEMBLY INFORMATION



Place the bushing (1) and chuck (2) over the cable.

Important: Chuck and Bushing cannot be placed over the cable after the assembly of the insert.

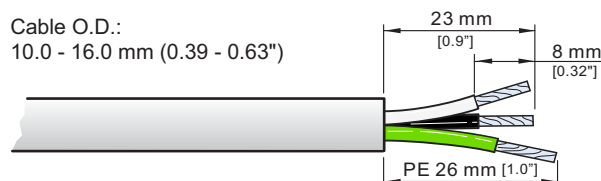
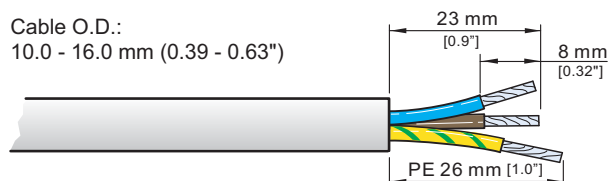
(3) For easier assembly please use a cable lubricante.

B

IEC/EN 60320-1

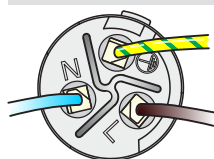
Prepare cable as shown.

UL60320-1
CAN/CSA-C22.2 No. 60320-1



C

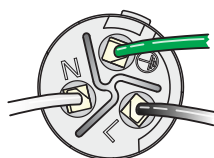
IEC/EN 60230-1



Torx size
T8

Torque Value 0.7 Nm
(6.2 inch pound / 0.52 lb.ft)

UL60320-1
CAN/CSA-C22.2 No. 60320-1

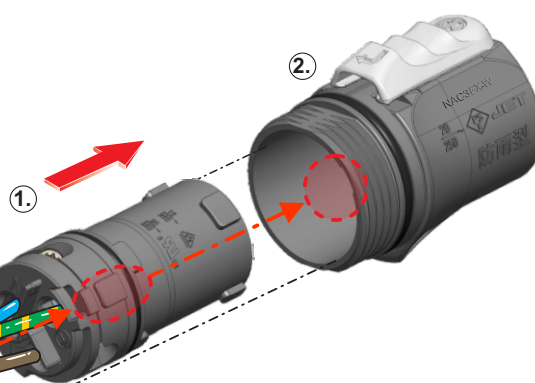
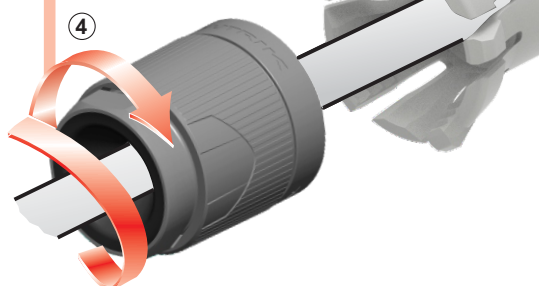


Slide the cable into the contacts and clamp with the screw with Torx size T8.

Typical Wiring	IEC 60320-1 EN IEC 60320-1	UL 60320-1 CSA C22.2 No. 60320-1
L ⇒	brown	black
N ⇒	blue	white
⊥ ⇒	green/yellow	green

D

Important:
Push and turn
simultaneously.

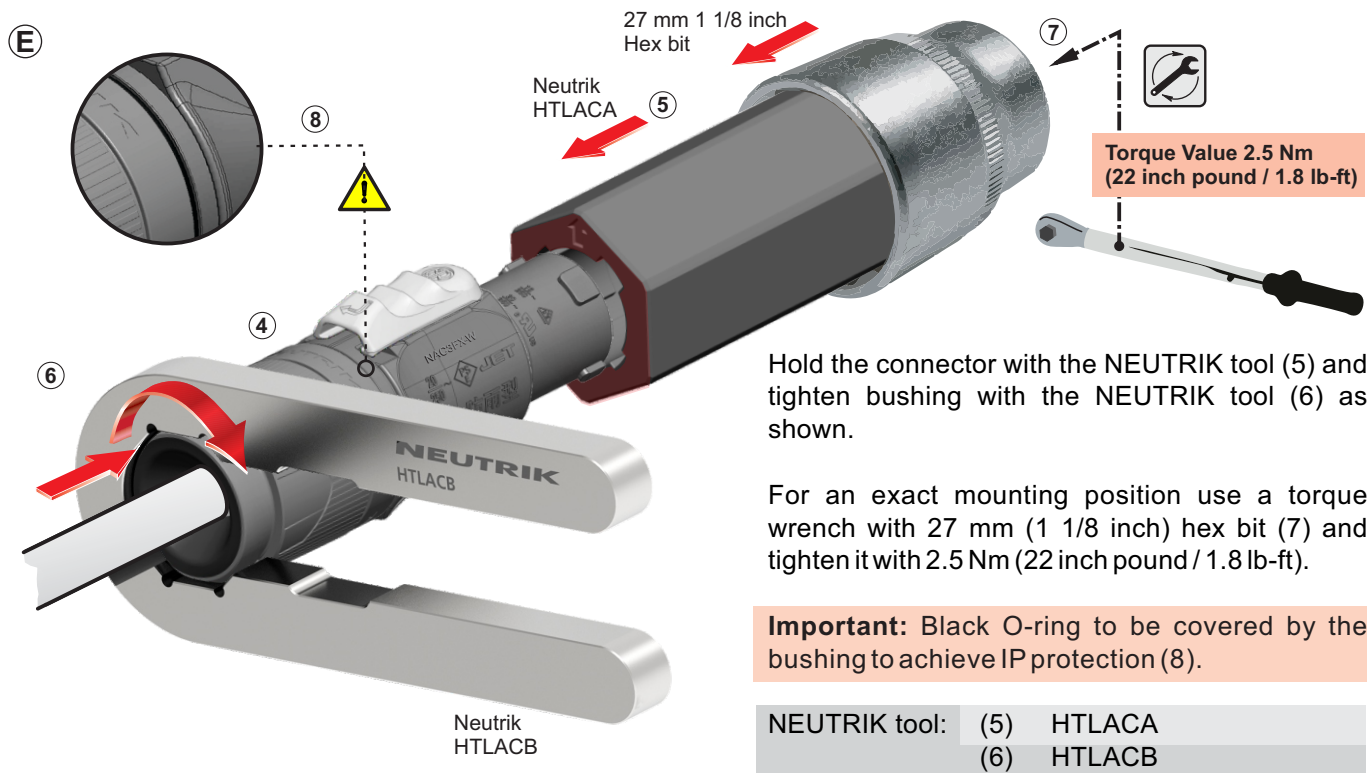


Position chuck (3) on insert (1).

Slide insert (1) with chuck (3) together into housing (2).

Important: Align the chuck by positioning the nose into keyway.

Slide bushing (4) over chuck (3).

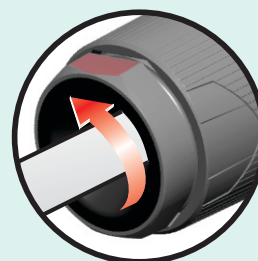


3 FOR DISASSEMBLY

1. Use the Neutrik tool HTLACB.
2. Position the tool on the surfaces and open the clamping sleeve.



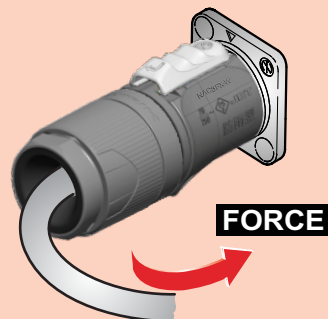
HTLACB



4 SAFETY INFORMATION

CAUTION

To ensure protection category, do not expose the connection to bending forces (e.g. do not attach loads to the cable, no free-dangling cable windings etc.).



SAFETY WARNING

For safety and certification reasons the connector must be replaced in case of any broken parts or excessive wear and tear.



5 Application and Safety Instructions

A Assembly

- When assembling and processing the product, ensure the use of appropriate personal protective equipment.
- Neutrik components must only be assembled with designated and specified components.
- Replacement parts are suitable only when used in combination with the designated components. The product's characteristics are guaranteed only in the intended combination.

B Application

- The product is exclusively intended for installation in electronic equipment or similar devices.
- The product is not intended for use in medical applications.
- The product is not intended for use in potentially explosive or flammable environments.
- Appliance couplers are not intended for use as climbing aids. Caution: Electrical hazards!
- Ensure that the connectors are either plugged in or protected against moisture with a suitable protective cap in potentially humid environments.

C Operation

- Before plugging in, check the contact area for dry surfaces.
- Product surfaces may cause burns at elevated ambient temperatures. Ensure the use of appropriate protective equipment.
- Neutrik products should only be combined with products from Neutrik Group brands.

D Cleaning

- Clean only with dry and lint-free materials or compressed air.
- The product must not be cleaned while under load. The product may only be cleaned while it is not connected to any voltage and without the use of cleaning agents.

E Damages

- Handle products with care.
- In case of visible damages, check the suitability of the product for use.

6 More Information on the website

<https://www.neutrik.com/en/product/nac3fx-w-top-l>

