



# PRODUCT MANUAL

## powerCON® TRUE1® TOP | NAC3MX-W-TOP

### 1 APPLICATION & SAFETY INSTRUCTION

✓ IP 65 RATED



#### APPLICATION:

- The powerCON® TRUE1® system is certified as appliance couplers with breaking capacity according to IEC 60320-1, EN IEC 60320-1, UL 60320-1, CSA C22.2 No. 60320-1.
- It serves to supply power to an appliance and from an appliance to other equipment.
- To be installed by qualified person only.
- Appliance couplers acc. to IEC 60320-1 are suitable to be used in cord sets and interconnection cord sets acc. to IEC 60799

#### POWER IN

APPLIANCE INLET  
NAC3MPX-TOP  
NAC3MPX-WOT-TOP



CONNECTOR  
NAC3FX-W-TOP

#### POWER OUT

APPLIANCE OUTLET  
NAC3FPX-TOP  
NAC3FPX-WOT-TOP  
NAC3FPX-ST-TOP



PLUG CONNECTOR  
NAC3MX-W-TOP

#### POWER IN / POWER OUT ► Combination

APPLIANCE INLET / APPLIANCE OUTLET  
NAC3PX-TOP



CONNECTOR  
NAC3FX-W-TOP

PLUG CONNECTOR  
NAC3MX-W-TOP

Products are in  
compliance with:

IEC 60320-1  
EN IEC 60320-1



UL 60320-1  
CSA C22.2 No. 60320-1



Ratings:

16A 250V AC

20A 250V AC

Conductor cross section:

1.5 - 2.5 mm<sup>2</sup>

16 - 12 AWG

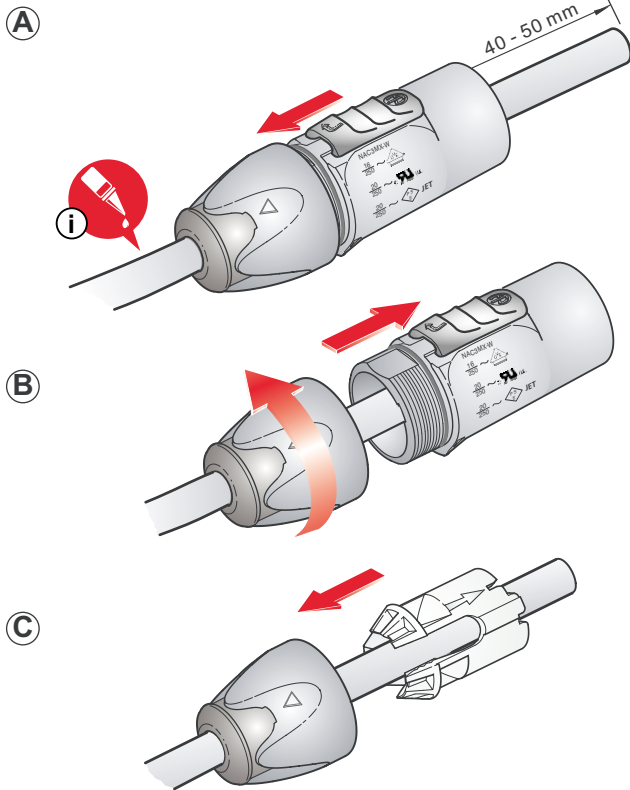
#### CABLE LIST

Approved cables:	3 x 1.5 mm <sup>2</sup>	3 x 2.5 mm <sup>2</sup>	
■ H07RN-F	✓	-	
■ H05VV-F	✓	✓	

Approved cables:	16/3 AWG	14/3 AWG	12/3 AWG
■ SOOW	-S	-L	-L
■ SJOOW	-S	-S	-L



## 2 ASSEMBLY INFORMATION



Place the bushing (1) and chuck (2) over the cable.

**Important:** Chuck and Bushing cannot be placed over the cable after the assembly of the insert.

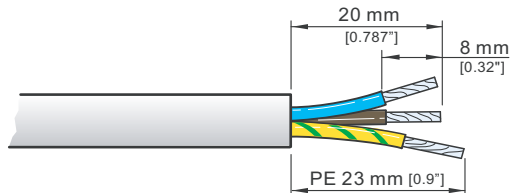
**i** For easier assembly please use a cable lubricante.  
Recommendation:  
Wire Pulling Lubricant - LUB-I/0.95 from 3M™

Separate the housing from the bushing  
(cable remain in bushing)

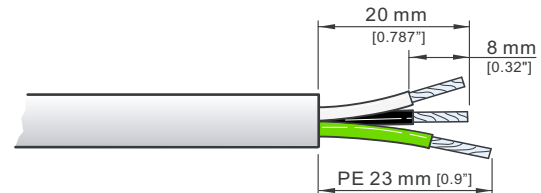
Place chuck over the cable.

Prepare cable as shown.

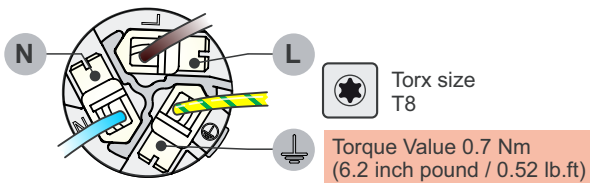
IEC 60320-1  
EN IEC 60320-1



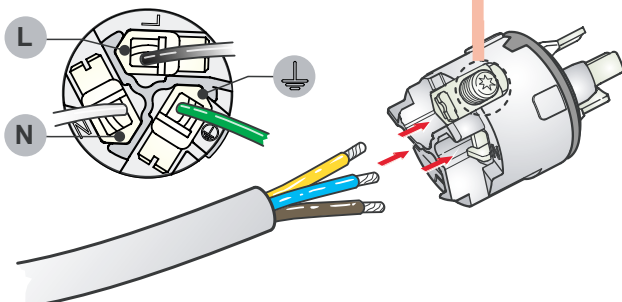
UL 60320-1  
CSA C22.2 No. 60320-1



IEC 60320-1  
EN IEC 60320-1



UL 60320-1  
CSA C22.2 No. 60320-1

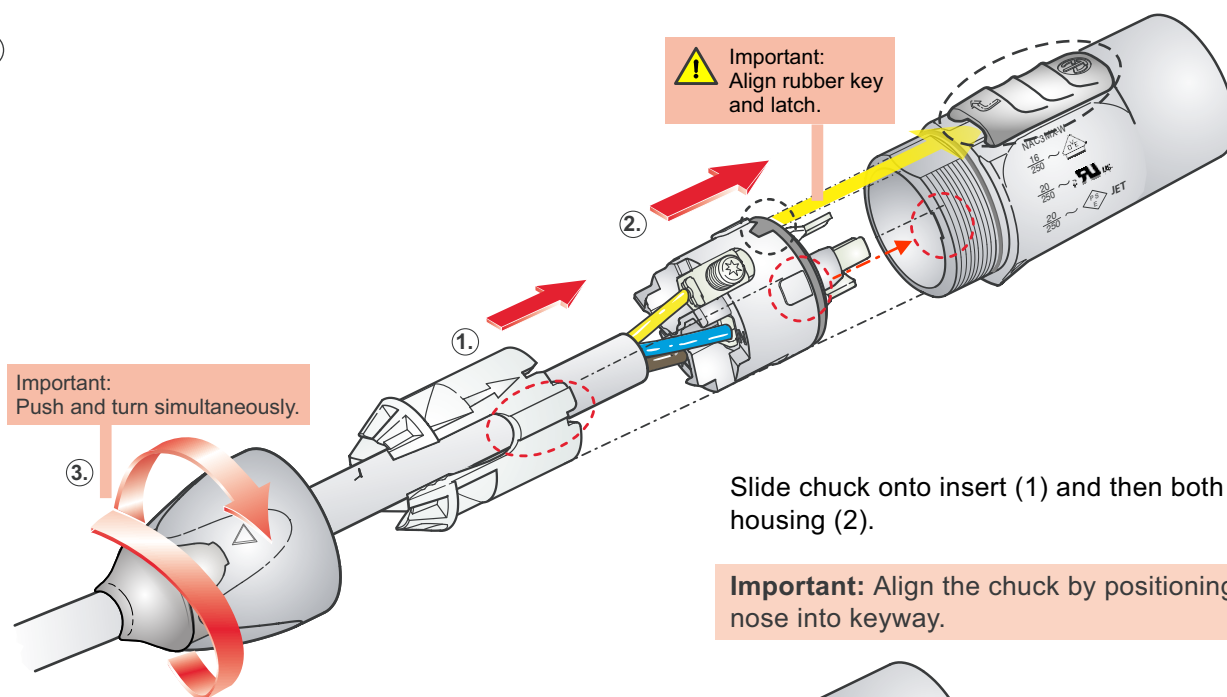


Slide the cable into the contacts and clamp with the screw with Torx size T8.

Typical Wiring	IEC 60320-1 EN IEC 60320-1	UL 60320-1 CSA C22.2 No. 60320-1
L ⇒	brown	black
N ⇒	blue	white
PE ⇒	green/yellow	green



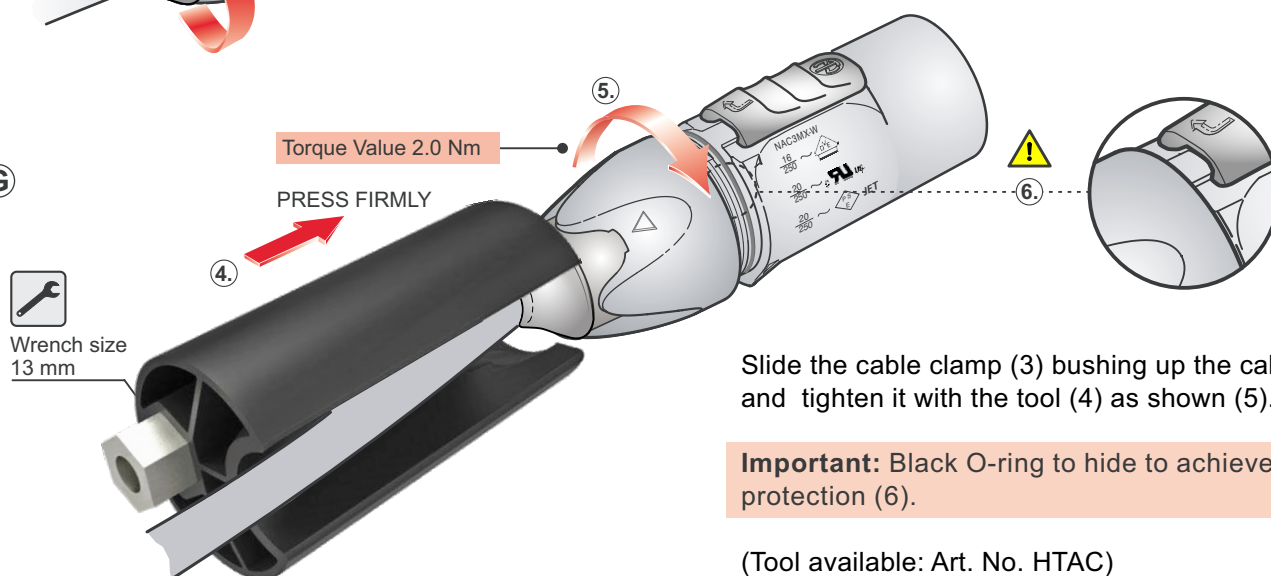
F



Slide chuck onto insert (1) and then both into housing (2).

**Important:** Align the chuck by positioning the nose into keyway.

G



Slide the cable clamp (3) bushing up the cable and tighten it with the tool (4) as shown (5).

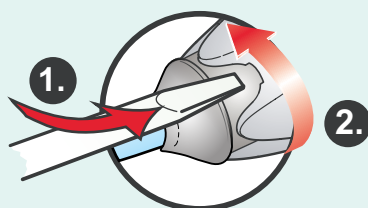
**Important:** Black O-ring to hide to achieve IP protection (6).

(Tool available: Art. No. HTAC)

### 3 FOR DISASSEMBLY

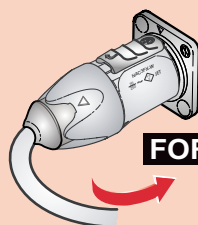
#### OPEN TWIST LOCK!

1. Press with screw driver to unlock
2. Turn bushing 360°.
3. Repeat step 1+2 until bushing is unscrewed.



### 4 SAFETY INFORMATION

#### CAUTION



To ensure protection category, do not expose the connection to bending forces (e.g. do not attach loads to the cable, no free-dangling cable windings etc.).

#### SAFETY WARNING



For safety and certification reasons the connector must be replaced in case of any broken parts or excessive wear and tear.



## 5 Application and Safety Instructions

### A Assembly

- When assembling and processing the product, ensure the use of appropriate personal protective equipment.
- Neutrik components must only be assembled with designated and specified components.
- Replacement parts are suitable only when used in combination with the designated components. The product's characteristics are guaranteed only in the intended combination.

### B Application

- The product is exclusively intended for installation in electronic equipment or similar devices.
- The product is not intended for use in medical applications.
- The product is not intended for use in potentially explosive or flammable environments.
- Appliance couplers are not intended for use as climbing aids. Caution: Electrical hazards!
- Ensure that the connectors are either plugged in or protected against moisture with a suitable protective cap in potentially humid environments.

### C Operation

- Before plugging in, check the contact area for dry surfaces.
- Product surfaces may cause burns at elevated ambient temperatures. Ensure the use of appropriate protective equipment.
- Neutrik products should only be combined with products from Neutrik Group brands.

### D Cleaning

- Clean only with dry and lint-free materials or compressed air.
- The product must not be cleaned while under load. The product may only be cleaned while it is not connected to any voltage and without the use of cleaning agents.

### E Damages

- Handle products with care.
- In case of visible damages, check the suitability of the product for use.

## 6 More Information on the website

<https://www.neutrik.com/en/product/nac3mx-w-top>



Document No.: BDA 542 V6  
Date: 2025-08-18

Neutrik AG | LI-9494 Schaan

[www.neutrik.com](http://www.neutrik.com)

Data subject to change without prior notice. © 2025 NEUTRIK®, NEUTRIK®, powerCON are registered trademark of Neutrik AG. ALL RIGHTS RESERVED.