



NEUTRIK®

TRUE OUTDOOR  
PROTECTION

XLR TOP

## Featured Products 2018

etherCON® TOP

powerCON® TRUE1 TOP

powerCON®

opticalCON®

opticalCON® MTP®24

etherCON® CAT6A

etherCON® CAT5e

etherCON® Adapter

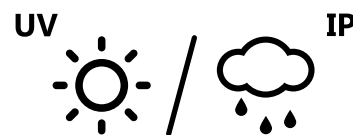
Asymmetric Push

NA2-IO-DLINE

mediaCON

XIRIUM PRO®

**NEUTRIK®**



# TRUE OUTDOOR PROTECTION

Neutrik's new range of TRUE OUTDOOR PROTECTION products for demanding outdoor applications is setting standards. Approved for outdoor use according to UL50E. UV resistant and IP65 rated.

## XLR TOP

TRUE OUTDOOR PROTECTION

RUGGED & RELIABLE



SUPERIOR QUALITY

UV RESISTANT IP65 RATED

etherCON® TOP

TRUE OUTDOOR PROTECTION

RUGGED & RELIABLE



SUPERIOR QUALITY

UV RESISTANT IP65 RATED

powerCON® TRUE1 TOP

TRUE OUTDOOR PROTECTION

RUGGED & RELIABLE



SUPERIOR QUALITY

UV RESISTANT IP65 RATED

Planned availability 3. Q / 2018



Rubber sealing protection



IP65 in mated condition



Locking release tab



**TRUE  
OUTDOOR  
PROTECTION**

**XLR TOP connector**



NC3FX-TOP



NC3MX-TOP



NC3FDX-TOP



NC3MDX-TOP

- Heavy-duty sealed XLR connector range
- 3 and 5 pin chassis and cable connector
- Outdoor protection acc. IP65 and UL 50E
- Uses high impact UV resistant materials per UL
- Gold plated contacts
- Maintain sealing when in use and when disconnected
- Optional waterproof and UV resistant protection cap

**Ordering Information**

**Cable Connector**

NC3FX-TOP	Heavy duty female 3 pole XLR cable connector
NC5FX-TOP	Heavy duty female 5 pole XLR cable connector
NC3MX-TOP	Heavy duty male 3 pole XLR cable connector
NC5MX-TOP	Heavy duty male 5 pole XLR cable connector

**Chassis Connector**

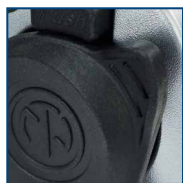
NC3FDX-TOP	Heavy duty female 3 pole XLR chassis connector
NC5FDX-TOP	Heavy duty female 5 pole XLR chassis connector
NC3MDX-TOP	Heavy duty male 3 pole XLR chassis connector
NC5MDX-TOP	Heavy duty male 5 pole XLR chassis connector
SCFDX-TOP	Sealing cover for NC*FDX-TOP
SCMDX-TOP	Sealing cover for NC*MDX-TOP



Rugged diecast shell



Metal shell



Outdoor assembly kit



**TRUE  
OUTDOOR  
PROTECTION**

**etherCON® TOP – lockable RJ45 connector system**



NE8MX-TOP



NE8FDV-TOP

- Heavy-duty sealed RJ45 system for harsh environment
- Rugged cable connector carrier accepting most common RJ45 plugs
- D-sized receptacles for PCB mount and IDC termination

- Outdoor protection acc. IP65 and UL50E
- Uses high impact UV resistant materials per UL
- Sealing when disconnected by attached cover
- Class D or CAT5e acc. ISO/IEC 11801 and TIA/EIA 568B

**Ordering Information**

**Cable Connector**

NE8MX-TOP Rugged RJ45 cable connector carrier

**Chassis Connector**

NE8FDV-TOP Rugged D-size chassis connector  
 NE8FDP-TOP Rugged D-size feedthrough chassis connector  
 NE8FDH-C5E-TOP Rugged D-size PCB mount chassis connector  
 SE8FD-TOP Outdoor assembly kit



New Ergonomic quick lock



Bushing with securing key and sealing



Rugged sealing cover



**TRUE  
OUTDOOR  
PROTECTION**

**powerCON® TRUE1 TOP – Lockable 16 A single phase connector**



NAC3FX-W-TOP



NAC3MX-W-TOP



NAC3MPX-TOP  
with SCNAC-MPX



NAC3FPX-TOP  
with SCNAC-FPX



NAC3PX-TOP  
with SCNAC-PX

- True mains connector with breaking capacity (CBC)
- Designed to be engaged and disengaged in normal use when live or under load
- Lockable 16 A (acc. ENEC, VDE) / 20 A (acc. UL) connector
- Complete system with inlet and outlet connectors
- Outdoor protection acc. IP 65 and UL50E enclosure type 4
- Uses high impact, UV resistant materials per UL
- Certified according IEC 60320-1 and UL 498

**Ordering Information**

**Cable Connector**

NAC3FX-W-TOP	Locking Power-In cable connector, female, screw terminals, IP 65
NAC3MX-W-TOP	Locking Power-Out cable connector, male, screw terminals, IP 65

**Chassis Connector**

NAC3FPX-TOP	Appliance outlet chassis connector, female, 1/4" flat tab terminals
NAC3FPX-ST-TOP	Appliance outlet chassis connector, female, screw terminals
NAC3FPX-WOT-TOP	Appliance outlet chassis connector, female, 1/4" flat tab terminals, without insulation divider
NAC3MPX-TOP	Appliance inlet chassis connector, male, 1/4" flat tab terminals
NAC3MPX-WOT-TOP	Appliance inlet chassis connector, male, 1/4" flat tab terminals, without insulation divider
NAC3PX-TOP	Appliance inlet-outlet chassis duplex, 1/4" flat tab terminals
SCNAC-FPX	Rubber sealing cover for NAC3FPX-TOP chassis
SCNAC-MPX	Rubber sealing cover for NAC3MPX-TOP chassis
SCNAC-PX	Rubber sealing cover for NAC3PX-TOP chassis



Quick lock



Neutrik bushing



3/16" flat tabs



Locking area on chassis connector



**powerCON® – Locking 3 Pole Power Connectors**



NAC3FCA



NAC3MPA-1



NAC3FCB



NAC3MPB-1



NAC3MM-1

- Lockable 3 pole single phase equipment (AC) connector
- High current capacity, rated at 20 A / 250 V ac
- Color coded for easy identification, powerCON offers power-in (blue) and power-out (grey) versions with different keying to avoid the possibility of intermating
- Fast and easy locking system
- Extremely robust and reliable
- Excellent cable retention
- UL, cUL recognized components acc. UL 1977
- VDE certified acc. IEC 61984
- Coupler for linking cables (couples NAC3FCA to NAC3FCB)

**COMBINATION & KEYWAYS**



With the two non-interchangeable types of connectors (A type and B type) it is impossible to produce a short circuit. Mating connectors (combination) are identified by mechanical keyways and by color.

**ATTENTION**

The technical data of the powerCON connectors refer to connectors without breaking capacity, meaning connecting devices are not to be engaged and disengaged in normal use when live or under load.

**Ordering Information**

NAC3FCA	Cable connector, quick lock with securing lever, A-type for power inlet, screw terminals
NAC3MPA-1	Air tight chassis connector, A-type for power inlet, flat tab terminals, blue
NAC3MPA-1-WOT	Chassis connector, power-in, 3/16" flat tab terminals, blue, without insulation divider
NAC3FCB	Cable connector, quick lock with securing lever, B-type for power outlet, screw terminals
NAC3MPB-1	Air tight chassis connector, B-type for power outlet, flat tab terminals, grey
NAC3MPB-1-WOT	Chassis connector, power-out, 3/16" flat tab terminals, grey, without insulation divider
NAC3MM-1	Coupler for linking cables (couples NAC3FCA to NAC3FCB)

opticalCON® FIBER OPTIC SYSTEMS

RUGGED & RELIABLE

SUPERIOR QUALITY

DUST AND WATER RESISTANT - IP65

opticalCON® Chassis

opticalCON® DUO

opticalCON® QUAD

opticalCON® MTP® 12

opticalCON® MTP® 24



NO2-4FDW-A



Standard LC connector



NO4FDW-A



Standard LC connector



NO12FDW-A



MTP® ELITE MALE connector



NO24FDW-A



MTP® ELITE MALE connector





opticalCON® ADVANCED

opticalCON® DUO



NKO2S-A\*

- 4 copper contacts
- 2 fibers

opticalCON® QUAD



NKO4S-A\*

- 4 fibers

opticalCON® MTP® 12



NKO12SA\*

- 12 fibers

opticalCON® MTP® 24



NKO24SA\*

- 24 fibers

opticalCON® LITE

opticalCON® DUO LITE



NKO2M-L\*

- 2 x 1.25 mm LC-ferrules

opticalCON® QUAD LITE



NKO4M-L\*

- 4 x 1.25 mm LC-ferrules

opticalCON® MTP® 12 LITE



NKO12M-L\*

- 12 fiber - MTP® ferrule

opticalCON® MTP® 24 LITE

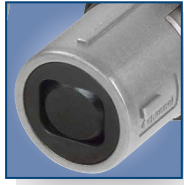


NKO24M-L\*

- 24 fiber - MTP® ferrule



Push-pull locking



Spherical shutter



24-channel MTP®



Color coded cable connector

**opticalCON® MTP® 24 ADVANCED**



**NKO24M-A\***

- Ruggedized and dirt-protected 24-channel fiber optic connection system
- For point-to-point multichannel routing based on MTP® technology
- Cable connector features rugged metal housing and heavy-duty cable retention
- Spherical shutter guarantees low maintenance
- Dust and water resistant according to IP65 in mated condition
- Easy to clean, no special tools required
- Reliable Push-Pull locking mechanism
- Cable connector comes pre-assembled with a choice of mobile field cables
- Wiring Type A

**opticalCON® MTP® 24 LITE**



**NKO24M-L\***

- 24-channel MTP® based fiber optic connection system
- Waterproof acc. to IP65 safety standard in mated condition
- Recommended for multi-signal transmission
- Push-pull locking mechanism
- Custom color coding
- Rugged housing
- Rubber protection cap
- Compatible with standard opticalCON ADVANCED NO24FDW-A chassis



Rubber sealing gasket



Rear MTP® connection



FOCD-STD for opticalCON DUO



FOCD-STQ for opticalCON QUAD



FOCD-STM for opticalCON MTP®

**opticalCON® MTP® 24 Chassis**



**NO24FDW-A with SCDP-0**

- Ruggedized and dirt-protected 24-channel fiber optic connection system
- For point-to-point multichannel routing
- Laser protective metal shutter seals dust proof with two-component rubber gasket
- Dust and water resistant according to IP65 in mated condition
- Accommodates standard MTP® ELITE MALE connectors on the rear for simple installation
- Rubber sealing gasket

**opticalCON® Service Tools**



**FOCD-STM**

Based on various customer requests we created new Service tools to inspect and clean our opticalCON cable connectors easily. The service tool is well-suited for all conventional LC or MTP® inspection tips and cleaning sticks.

- Provides proper alignment to enhance inspection and cleaning procedure
- Lockable with opticalCON cable connector
- Compatible with conventional cleaning and inspection equipment

**Ordering Information for opticalCON®**



→ Part Number Generator

**Ordering Information**

FOCD-STD	Service tool for opticalCON DUO
FOCD-STQ	Service tool for opticalCON QUAD
FOCD-STM	Service tool for opticalCON MTP®



Rugged diecast shell



Feedthrough



IDC version



IP protected

## etherCON® CAT6A Series



NE8MX6



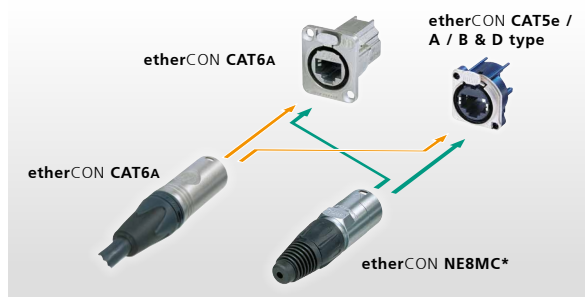
NE8FDX-P6



NE8FDX-Y6-W

- Ruggedized connector range with CAT6A component compliance according to ISO / IEC 11801 respectively EN50173-1 and CAT6A according to TIA / EIA 568-C.2
- D-size chassis connector for IDC self-termination or as feedthrough adapter
- IP 65 protected version available
- PoE+ compliant according to 802.3at Type2
- Downwards compatible with the existing etherCON CAT5 range

### CAT6A / CAT5\* compatibility:



## Ordering Information

NE8MX6	etherCON cable connector CAT6A, nickel plating, Insulation diameter: > 1.10 - 1.60 mm
NE8MX6-B	etherCON cable connector CAT6A, black plating, Insulation diameter: > 1.10 - 1.60 mm
NE8MX6-T	etherCON cable connector CAT6A, nickel plating, Insulation diameter: > 0.85 - 1.10 mm
NE8MX6-B-T	etherCON cable connector CAT6A, black plating, Insulation diameter: > 0.85 - 1.10 mm
NE8FDX-P6	etherCON chassis CAT6A shielded feedthrough, nickel plating
NE8FDX-P6-B	etherCON chassis CAT6A shielded feedthrough, black plating
NE8FDX-Y6	etherCON chassis CAT6A shielded IDC, nickel plating
NE8FDX-Y6-B	etherCON chassis CAT6A shielded IDC, black plating
NE8FDX-P6-W	etherCON chassis CAT6A shielded feedthrough, with integrated rubber sealing cap, IP 65
NE8FDX-Y6-W	etherCON chassis CAT6A shielded IDC, with integrated rubber sealing cap, IP 65

## Accessories

HX-CAT6A	Parallel press tool CAT6A
----------	---------------------------



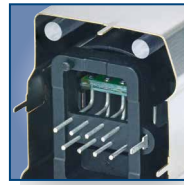
Horizontal PCB



Vertical PCB with lightpipes



Locking release tab



Shielded version

## etherCON® CAT5e PCB Receptacle



NE8FAH-C5



NE8FBH-C5-LED



NE8FBV-C5-LED



NE8FBV-C5-LED-S

- Space saving A or B type receptacles - horizontal or vertical PCB design available
- Vertical PCB design at 24 mm distance to front panel – fits the widely accepted industry standard dimension for XLRs, 1/4" jacks etc.
- PoE+ compliant according to 802.3at Type2
- CAT5e performance according to ISO / IEC 11801 and TIA / EIA 568-C.2
- Shielded or non-shielded versions available
- Two types of light pipes available to accommodate through hole LEDs or SMD-LEDs
- Accommodates rugged etherCON NE8MC\* cable carriers or any standard RJ45 plug

### Ordering Information

NE8FAH-C5	etherCON A type horizontal PCB CAT5e
NE8FBH-C5	etherCON B type horizontal PCB CAT5e
NE8FBH-C5-S	etherCON B type horizontal PCB CAT5e with shielding
NE8FBH-C5-LED	etherCON B type horizontal PCB CAT5e through hole LED
NE8FBH-C5-LED1	etherCON B type horizontal PCB CAT5e SMD LED
NE8FBH-C5-LED-S	etherCON B type horizontal PCB CAT5e through hole LED with shielding
NE8FBH-C5-LED1-S	etherCON B type horizontal PCB CAT5e SMD LED with shielding
NE8FAV-C5	etherCON A type vertical PCB CAT5e
NE8FBV-C5	etherCON B type vertical PCB CAT5e
NE8FBV-C5-S	etherCON B type vertical PCB CAT5e with shielding
NE8FBV-C5-LED	etherCON B type vertical PCB CAT5e through hole LED
NE8FBV-C5-LED1	etherCON B type vertical PCB CAT5e SMD LED
NE8FBV-C5-LED-S	etherCON B type vertical PCB CAT5e through hole LED with shielding
NE8FBV-C5-LED1-S	etherCON B type vertical PCB CAT5e SMD LED with shielding



Rugged diecast shell



Neutrik cable retention



Rugged diecast shell



IP65 Protected in mated condition

**etherCON® Cable Carriers**



NE8MX-B-1

- The RJ45 system for harsh and demanding environment
- Cable connector carrier accepts the most common RJ45 plugs
- Cable connector carrier has rugged diecast shell and unique chuck type strain relief
- Protects Ethernet connections in a variety of commercial type applications and is designed to prevent breakage of the fragile components of standard RJ45 connectors
- Cable connector carrier does not include RJ45 plug

**etherCON® CAT6A Adapter**



NE8FFX6-W

- Ruggedized coupler with CAT6<sub>A</sub> component compliance according to ISO/IEC 11801 and TIA/EIA 568-C.2
- IP65 protected when mated with NE8MX6\*
- Accommodates standard RJ45 plug
- Revolutionary small form factor
- The adapter offers the million fold proven robust latch lock system
- The adapters are problem solvers for various intermating problems for professional and semi-professional applications

**Ordering Information**

NE8MX-B	Black chromium housing with chuck and bushing, allows assembly of preassembled conventional RJ45 cables
NE8MX-B-1	Black chromium housing with chuck and X-series bushing for non preassembled cable

**Ordering Information**

NE8FFX6-W	etherCON CAT6 <sub>A</sub> feedthrough adapter, rubber sealing protection, IP65
-----------	---



New ergonomic asymmetric locking release tab

## Asymmetric Push – solution for space sensitive applications



NC5FAH-DA



NC3FBH1-DA



NCJ6FA-V-DA

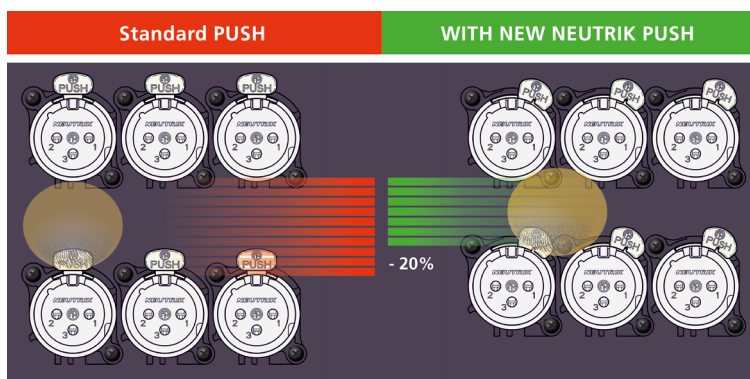


PUSH-ASYM

For space sensitive applications (e.g. plug-in modules and small portable devices), we have developed the asymmetric push tab. By using this new design, a vertical (stacking) space saving of approx. 20% can be achieved.

The new asymmetric push tab is being introduced on the products listed below. This reflects most possible combinations. Based on customer requests and quantity commitments, we can in the future release additional special versions with asymmetric push tabs within the NE8FA\* series, NCJ\*FI series, and DLX series. Reach out to Neutrik to discuss the possibilities and requirements for such additional parts.

For small quantities, you can order the asymmetric push tab as stand-alone accessory part (PUSH-ASYM) and combine it with every "-D" packaged product in the A-Series, AA-series, B-series, NE8FA\* series, NCJ\*FI series, and DLX series.



Space saving of appr. 20% can be achieved!

## Ordering Information

NC3FAAH1-DA	NC3FAV1-DA	NC3FBH1-DA	NCJ6FA-H-DA
NC3FAAV1-DA	NC3FAV2-DA	NC3FBH2-DA	NCJ6FA-V-DA
NC3FAH1-DA	NC5FAH-DA	NC3FBV1-DA	PUSH-ASYM
NC3FAH2-DA	NC5FAV-DA	NC3FBV2-DA	

# NA2-IO-DLINE

**RUGGED HOUSING**

**RACK MOUNTABLE**



**2 x INPUT/  
OUTPUT**

**LOCKABLE CHASSIS**





## NA2-IO-DLINE

### Line I/O to Dante™ Interface

Connect your legacy audio gear to the Dante™ world



NA2-IO-DLINE

- Connect analog audio equipment to a Dante™ network
- Heavy duty adapter for rugged stage conditions
- Lockable audio and network connections
- Convert up to two analog line signals to a Dante™ network
- Feed non Dante™ ready amplifiers, speakers or mixing desks with signals from the Dante™ network
- Requires a Power over Ethernet switch or a PoE injector (802.3 af/at; class 1)
- AES67 compliant
- Rack mountable

### What is it?

The NA2-IO-DLINE is an end-of-network device. It is a breakout box which allows two channels of audio to be integrated into a Dante™ network. Simultaneously, NA2-IO-DLINE converts a Dante™ stream into analog audio signals. Hence, it is possible to use this tiny box to feed analog audio signals into the Dante™ network while at the same time receiving a mix from another Dante™ source.

NA2-IO-DLINE is designed for harsh stage conditions. It therefore features lockable chassis connectors for both the audio and network connections. For fixed installations, the rubber protection can be removed. With optional mounting brackets or a rack panel, the box can be mounted below tables, in floor boxes, or in equipment racks.

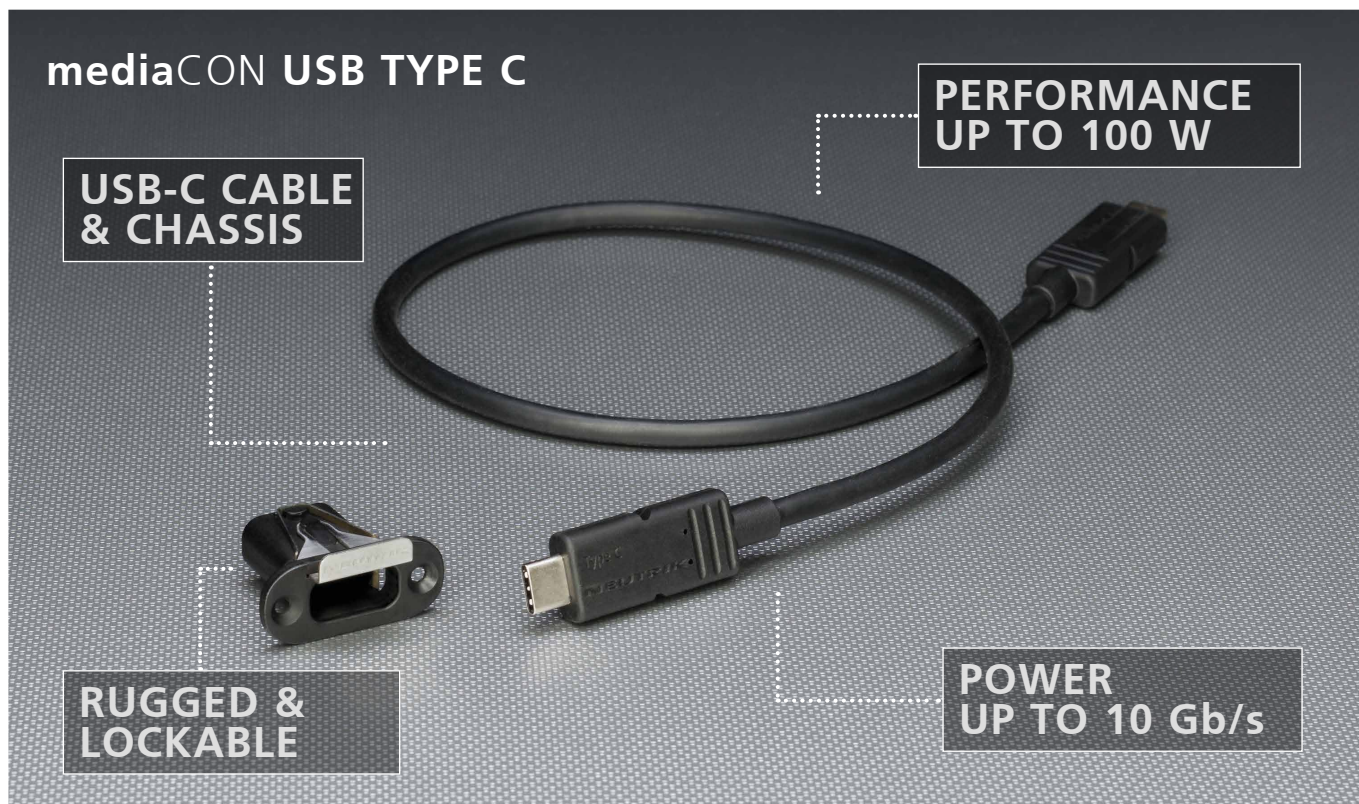
### Accessories



NRP1RU-2A: 1 RU 19" Rack unit for NA2-IO-DLINE



NA-MB-KIT: Mounting bracket kit



## mediaCON the new USB-C multimedia solution

The innovative USB-C multimedia system for demanding broadcast and professional A/V applications.

- Guaranteed performance up to 10 Gb/s (USB3.1 Gen.II compatibility)\*\*
- Push Pull mating design provides secure locking system if mated with NMC-\*
- Reversible USB-C cable connector
- Power delivery up to 100 W (@5 A / 20 V)
- Shielded connection – high noise immunity and EMI protection
- Mates with conventional USB-C receptacles
- Front and rear side mountable
- Guiding housing for better protection of receptacles

### Ordering Information

#### Cable

NMK-20U-\* Lockable USB Type C cable with over molded flex relief and rugged strain relief, \*...length 0.5 m or 1.0 m

#### Chassis Connector

NMC-C Locking USB C Type chassis

NMC-C-HR Lockable USB Type C chassis with integrated USB IF approved receptacle

\*\* ... Performance will vary depending on your additional hardware and software components and configurations.

## Digital Wireless Audio Solution

**XIRIUM PRO**  
SOLUCIÓN INALÁMBRICA DE TRANSMISIÓN DIGITAL DE AUDIO



### PURE SOUND

- Superior audio quality
- 5 GHz band
- Digital Transmission



### ROBUST TRANSMISSION

- Proprietary protocol
- Correction algorithm
- Repeater unit
- XROC mode
- Software App



### PLUG & PLAY

- Easy setup
- Modular I/O concept
- Flexible power supply



## Innovative technology – studio sound quality

With XIRIUM PRO, a digital wireless audio system based on DiWA technology, Neutrik sets a new standard in professional wireless audio transmission.

### XIRIUM PRO – the product

XIRIUM PRO combines digital transmission facilitating the highest possible sound quality, reliability, and outstanding performance in one unique solution. Neutrik, known as the global leader in manufacturing connector technology for the professional entertainment industry, completes the innovation circle in audio connectivity, by providing solutions with copper connectors, fiber optic systems and now wireless solutions.

**DiWA**  
DIGITAL WIRELESS AUDIO

### Liechtenstein (Headquarters)

Neutrik AG, Im alten Riet 143, 9494 Schaan  
T +423 237 24 24, F +423 232 53 93, neutrik@neutrik.com

### Germany / Netherlands / Denmark / Austria

Neutrik Vertriebs GmbH, Felix-Wankel-Strasse 1, 85221 Dachau, Germany  
T +49 8131 28 08 90, neutrik@neutrik.de

### Great Britain

Neutrik (UK) Ltd., Westridge Business Park, Cothey Way  
Ryde, Isle of Wight PO33 1 QT  
T +44 1983 811 441, sales@neutrik.co.uk

### France

Neutrik France SARL, 52 rue d'aguesseau, 1er etage, 92100 Boulogne-Billancourt  
T +33 1 41 31 67 50, info@neutrik.fr

### USA

Neutrik USA Inc., 4115 Taggart Creek Road, Charlotte, North Carolina, 28208  
T +1 704 972 30 50, info@neutrikusa.com

### Japan

Neutrik Limited, Yusen-Higashinohonbashi-Ekimaie Bldg., 3-7-19  
Higashinohonbashi, Chuo-ku, Tokyo 103  
T +81 3 3663 47 33, mail@neutrik.co.jp

### Hong Kong

Neutrik Hong Kong LTD., Suite 18, 7th Floor Shatin Galleria  
Fotan, Shatin  
T +852 2687 6055, sales@neutrik.com.hk

### China

Ningbo Neutrik Trading Co., Ltd., Shiqi Street, Yinxian Road West  
Fengjia Villiage, Hai Shu District, Ningbo, Zhejiang, 315153  
T +86 574 88250833, sales@neutrik.com.cn

### India

Neutrik India Pvt. Ltd., Level 3, Neo Vikram, New Link Road,  
Above Audi Show Room, Andheri West, Mumbai, 400053  
T +91 982 05 43 424, anklesaria@neutrik.com

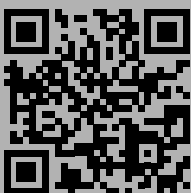
### Associated companies

#### Contrik AG

Steinackerstrasse 35, 8902 Urdorf, Switzerland  
T +41 44 736 50 10, contrik@contrik.ch

#### H. Adam GmbH

Felix-Wankel-Straße 1, 85221 Dachau, Germany  
T +49 08131 28 08-0, anfrage@adam-gmbh.de



[www.neutrik.com](http://www.neutrik.com)

FEATURED PRODUCT