



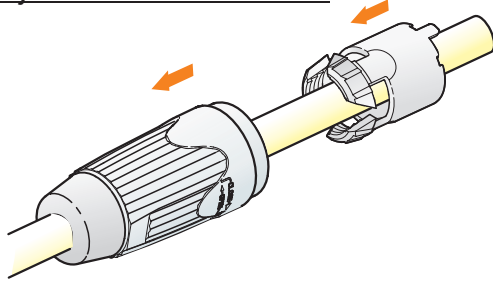
# ASSEMBLY INSTRUCTION

## speakON STX Series | Lockable Loudspeaker Connector

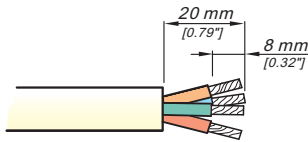
### 4 pole Cable Connector with metal housing

#### Assembly of the Cable Connector:

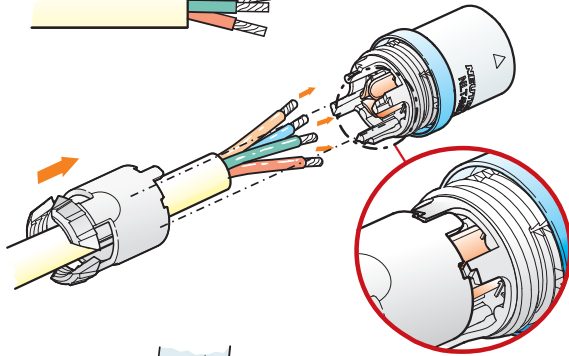
(A)



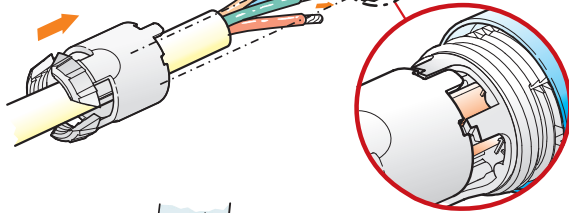
(B)



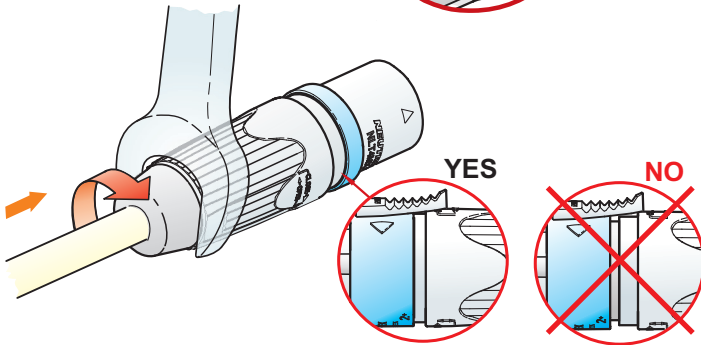
(C)



(D)



(E)



(A) Place bushing and chuck over the cable.

(B) Prepare cable as shown.

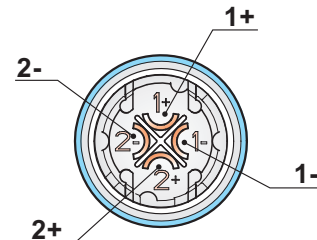
(C) Solder the wire ends to contacts of insert.

(D) Slide the chuck up the cable and align with the housing.

**Important:** Align the chuck by positioning the nose into the smaller recess.

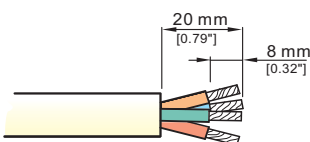
(E) Slide the bushing up the cable and tighten it (flat wrench SW 22mm).

**Important:** Bushing must be screwed onto housing minimum 3 turns thus there is no gap between housing and bushing.

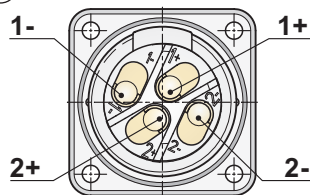


#### Wiring of the Receptacle and the Female Cable Connector:

(A)



(B)



(A) Prepare cable as shown.

(B) Insert the wires into the terminals and solder it.

NEUTRIK AG  
NEUTRIK Zürich AG  
NEUTRIK USA Inc.  
NEUTRIK (UK) Ltd.

LI T: +423 / 237 24 24 F: +423 / 232 53 93  
CH T: +41 44 / 736 5010 F: +41 44 / 736 5011  
USA T: +1 732 / 901 9488 F: +1 732 / 901 9608  
UK T: +44 1983 / 811 441 F: +44 1983 / 811 439

NEUTRIK Vertriebs GmbH DE/NL/AT T: +49 8131 / 280 890 F: +49 8131 / 280 830  
NEUTRIK France FR T: +33 1 / 4131 6750 F: +33 1 / 4131 0511  
NEUTRIK Tokyo Ltd. JP T: +81 3 / 3663 4733 F: +81 3 / 3663 4796  
NEUTRIK Hong Kong Ltd. HK T: +852 / 2687 6055 F: +852 / 2687 6052

Draft. Nr.: BDA 118 / 3102M1181 | Update: 29.09.2009 | Data subject to change without prior notice. ©2009 NEUTRIK®. ALL RIGHTS RESERVED.

www.neutrik.com

**NEUTRIK**